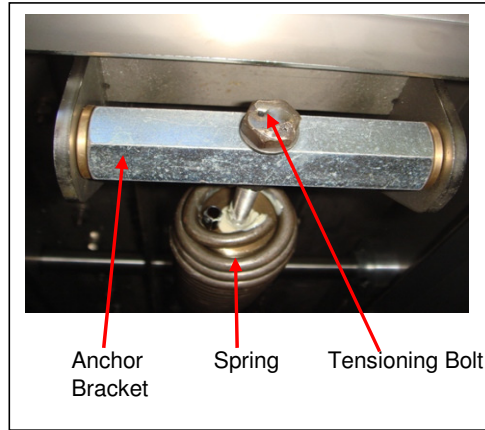
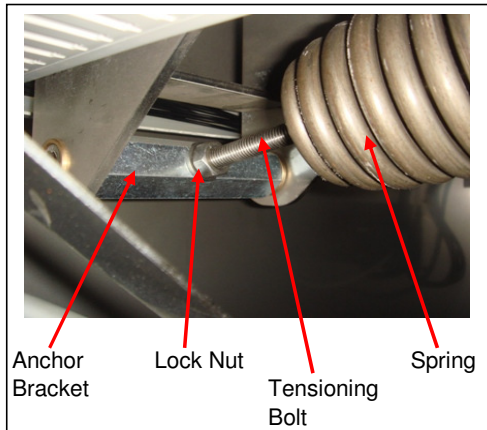
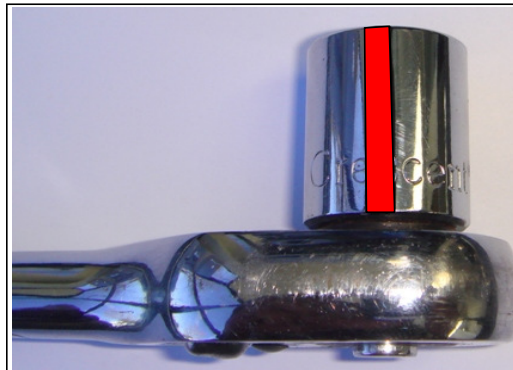
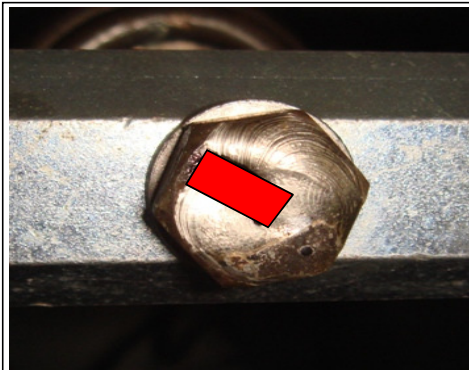


## MVS Swing Lid Spring Adjustments

1. Locate all springs inside the machine.
  - Remove the appropriate side panel and/or control board to access the spring anchor bracket



2. Using a marker mark a starting point the tensioning bolt or the socket set.



3. Testing parameters.
  - a. When the lid is pressed down to the left side of the working deck and released, the lid release height should be about 4 inches.
    - If the release height is more than 4 inches, the right spring tension is higher than the left side.
  - b. When the lid is pressed down to the right side of the working deck and released, the lid release height should also be about 4 inches.
    - If the release height is more than 4 inches but equal to the other side, then all spring tension should be loosened equally for the lid to release about 4 inches on both sides of the working deck.
    - If the lid release height is less than 4 inches, the left spring tension is lower than the right side.
    - If the release height is more than the other side, the left spring tension is higher than the right side.
4. Spring adjustments.
  - a. If the machine is equipped with 2 left springs and 2 right springs, then the springs on each side must be adjusted equally.
  - b. Loosen or tighten the springs on one side and check the lid release height on both side of the working deck.
  - c. Adjust the springs on the opposite accordingly to obtain the lid release height of 4 inches.